












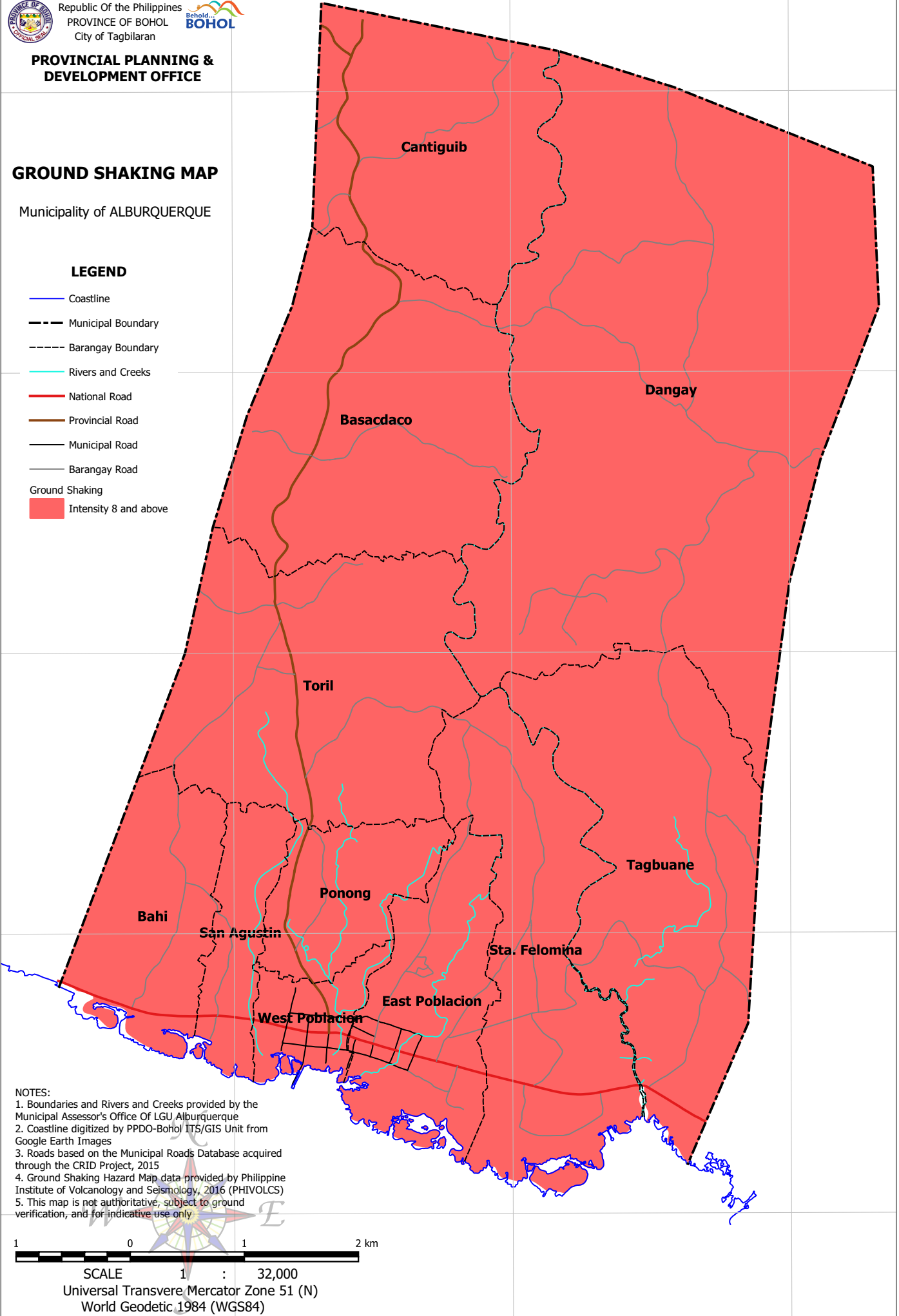
**PROVINCIAL PLANNING &  
 DEVELOPMENT OFFICE**

**GROUND SHAKING MAP**

Municipality of ALBURQUERQUE

**LEGEND**

-  Coastline
-  Municipal Boundary
-  Barangay Boundary
-  Rivers and Creeks
-  National Road
-  Provincial Road
-  Municipal Road
-  Barangay Road
- Ground Shaking
-  Intensity 8 and above



**NOTES:**

1. Boundaries and Rivers and Creeks provided by the Municipal Assessor's Office Of LGU Alburquerque
2. Coastline digitized by PPDO-Bohol ITS/GIS Unit from Google Earth Images
3. Roads based on the Municipal Roads Database acquired through the CRID Project, 2015
4. Ground Shaking Hazard Map data provided by Philippine Institute of Volcanology and Seismology, 2016 (PHIVOLCS)
5. This map is not authoritative, subject to ground verification, and for indicative use only.



SCALE 1 : 32,000  
 Universal Transverse Mercator Zone 51 (N)  
 World Geodetic 1984 (WGS84)

123°57'E

123°58'E

123°59'E

9°40'N

9°40'N

9°39'N

9°39'N

9°38'N

9°38'N

9°37'N

9°37'N

9°36'N

9°36'N